

laplink.

PCmover[®] Professional

The Only Software that Moves Programs,
Files, and Settings to a New PC!

User Guide

Laplink Software, Inc.

Customer Service/Technical Support:

Web: <http://www.laplink.com/contact>

E-mail: CustomerService@laplink.com

Tel (USA): +1 (425) 952-6001

Fax (USA): +1 (425) 952-6002

Tel (UK): +44 (0) 870-2410-983

Fax (UK): +44 (0) 870-2410-984

Laplink Software, Inc.
600 108th Ave. NE, Suite 610
Bellevue, WA 98004
U.S.A.

Copyright / Trademark Notice

© Copyright 2014 Laplink Software, Inc. All rights reserved. Laplink, the Laplink logo, Connect Your World, and PCmover are registered trademarks or trademarks of Laplink Software, Inc. in the United States and/or other countries. Other trademarks, product names, company names, and logos are the property of their respective holder(s).

laplink[®]
connect your world

Contents

Introduction and Installation

Introduction	1
Glossary	1
Additional Transfer Options	1
Pre-Installation Checklist	1
Installing PCmover	2

Preparing for the Transfer

Pre-Transfer Checklist	2
Transfer Information	3

Transfer: Set Up and Completion

Old PC: Setting Up the Transfer	4
New PC: Setting Up the Transfer	6
Transferring from the Old PC to the New PC.	13

Help and Hints

Additional Assistance	14
Undoing a Transfer	15
Feedback and Support	16

Laplink PCmover Professional is the quick and easy way to transfer from one PC to another PC. This powerful application transfers all of your selected programs, files, and settings from the old PC to the new PC.

PCmover Professional can transfer your PC across a network, Laplink USB cable, or Laplink Ethernet cable. If your computer has multiple users, PCmover gives you the option to transfer some or all of the users. The security information about file ownership and access control is preserved for each user.

Support – PCmover FREE Transfer Assistance (877) 904-9644

Call this toll-free number (877) 904-9644, anytime, and a tech professional will guide you through the entire transfer.

If outside the USA/Canada, please visit: www.laplink.com/FTA and for all other inquiries, visit: www.laplink.com/contact

Glossary

Old PC/Source PC	The source PC is the “old” PC that contains the applications, files, and settings that you wish to move to the destination, or “new” PC.
New PC/Destination PC	The “new” PC is the PC to which the applications, files, and settings are moved.
Transfer	The process of copying all of your selected applications, files, and settings from your “old” PC to your “new” PC.

Additional Transfer Options

- **PCmover Windows 8 Upgrade Assistant:** For upgrading from Windows XP/ Vista/7 to Windows 7 or 8 on the SAME PC, PCmover offers an in-place upgrade. This option allows you to upgrade to Windows 7 or 8 and automatically restores all your applications, data, and settings after the upgrade.

See the PCmover Windows 8 Upgrade Assistant user guide on Laplink’s Web

site for complete instructions for an in-place upgrade (the user guide you are currently referencing only gives instructions for a standard “old” PC to “new” PC migration):

<http://www.laplink.com/pcmover/inplaceupgrade/pro8>

- **PCmover Image & Drive Assistant:** With PCmover Image & Drive Assistant, you can restore the programs, files and settings from an image or an old hard drive, even if the image is from an earlier version of Windows.

See the PCmover Image & Drive Assistant user guide on Laplink’s Web site:

www.laplink.com/pcmover/ida/pro8

Pre-Installation Checklist (both PCs)

The source PC is the “old” PC that contains the applications, files, and settings that you wish to move to the destination, or “new” PC.

System requirements for each PC:

- CPU: Intel® or compatible Pentium® or higher processor.
- RAM: Same as minimum required by operating system.
- Available hard disk space: 200 MB.
- Window 8/7/Vista/XP, including Windows XP Media center and XP Tablet.

PCmover does not support full server restorations, such as is found on Windows Server 2003 and Server 2008. It will execute on these operating systems and can be used to restore accounts and applications. However, it will not properly restore any of the systems services and settings such as the Domain Name Service or Terminal Licensing.

- The operating system on the new PC must be the same as or newer than the operating system on the old PC.
- All Windows Important Updates should be applied to the NEW PC. To open Windows Update:
 - Windows 8: Press the **Windows key + X**. In the menu that appears,

click **Control Panel**. Then, click **System and Security** and click **Windows Update**. In the left pane, click **Check for updates** and choose to install all Important Updates.

- **Windows 7 and Windows Vista:** Click the **Start** button, click **All Programs**, and then click **Windows Update**. In the left pane, click **Check for updates** and choose to install all Important Updates.
- Do not plug in the Laplink USB cable or Laplink Ethernet cable until directed to do so later by the PCmover application.

IMPORTANT: A single license of PCmover may be used on a single PC or for a migration from an original source PC to a new PC. Migrations to additional new/destination PCs are prohibited with a single license. For complete details, refer to the End User License Agreement (EULA).

To purchase additional licenses, please visit <http://www.laplink.com> or contact our sales department at (800) LAPLINK (527-5465) or (425) 952-6001.

Installing PCmover (both PCs)

To install PCmover from a downloaded file, follow these steps on each PC:

1. Double-click on the **pcmover_en.exe** file in the folder where the file was saved. Follow the on-screen prompts.

You may see the User Account Control dialog. If so, click **Yes** to allow "Setup Launcher" to run, which will start the PCmover installation.
2. Repeat these instructions on the second PC.

To install PCmover from a CD, follow these steps on each PC:

1. Insert the CD into the CD-ROM drive.
2. In the AutoPlay dialog that appears, click **Run Welcome.exe**, which will start the PCmover installation. Follow the on-screen prompts.

You may also see the User Account Control dialog. If so, click **Yes** to start the PCmover installation.

If you don't see the AutoPlay dialog and the PCmover installation hasn't started, use Windows (File) Explorer to display the contents of the CD. Browse to (or search for) the **pcmover_en.exe** file, and double-click the file to begin the installation. Follow the on-screen prompts.

3. Repeat these steps on the second PC.

Pre-Transfer Checklist (both PCs)

The following items should be addressed and/or completed on both of your PCs *before* starting PCmover.

- **PCmover Installation:** PCmover has been installed on both PCs.
- **Administrator-level Permissions:** On some operating systems, you will need Administrator-level permissions to perform a transfer.
- **Hard Disk Space (Old PC vs. New PC):** The hard drive(s) on the new computer has as much or more disk space as that on the old computer.
- **Windows Versions (Old vs. New):** The new PC has the same Windows version as or newer Windows version than that installed on the old PC.
- **Internet Explorer Versions (Old vs. New):** The new PC should have the same or newer version of Internet Explorer as that installed on the old PC.
- **Review Applications on Each PC:** You should not try to transfer applications that already appear on both PCs. Please see **Application Selections** on page 10 of this guide for details.

Example: Assume Microsoft Word is on the old PC and on the new PC. You should not attempt to transfer the Microsoft Word application, although transferring Word documents is fine.

IMPORTANT: Trial versions of applications should *always* be uninstalled from the new PC before transferring a full version of the same application from the old PC.

- **Network Domain PCs:** Corporate PCs on a network domain should be connected and logged into the domain at least once prior to the transfer.
- **Computer Cleanup:** Laplink recommends that you run ScanDisk or a similar disk checking utility, as well as antivirus and antispyware software on the old and the

new computers before the transfer.

- **PC Power Settings/Options:** Screen savers, hibernation protocols, and power-saving options on both computers should be turned OFF (i.e. All power management options in the Control Panel should be set to “Never” so they are completely disabled). Both computers need to remain on and completely “awake” during the transfer and must not go into screensaver or sleep/hibernation mode.

A laptop PC must be plugged into a power outlet, rather than running on its batteries, as the transfer is likely to take a longer time than the battery life.

- **Disable All Scheduled Tasks/Programs:** Using the Windows Task Scheduler (within Administrative Tools), turn off any tasks or programs that are set to automatically run, as these will interfere with a PCmover transfer.
- **Exit All Programs:** Exit all programs that are running on both computers. Turn off system tools such as virus scanners, spyware scanners, firewall software, and desktop search utilities on both PCs. Due to the nature of these types of applications, you should choose not to transfer them, as they are unlikely to transfer correctly. Please see **Application Selections** on page 10 of this guide for details.

Note: As a safeguard, PCmover makes it possible, if necessary, to revert back to the original state and settings of your new PC. See ‘Undoing a Transfer’ on page 15 of this guide for instructions.

Transfer Information

- **Set Up Old PC First:** To perform a PCmover transfer, start PCmover on your old PC first. Complete the PCmover screens as directed in the section **Old PC: Setting Up the Transfer** (see page 4).

Then, when instructed to do so by PCmover, start PCmover on the new PC. Complete the screens to prepare your new PC and perform the transfer (beginning with the section **New PC: Setting Up the Transfer** on page 6).

- **Length of Time:** The transfer may take quite a while, depending on several factors: the size of the hard drive(s) you are transferring, the amount of data on them, their level of fragmentation, the number and size of applications and other files and folders you are transferring, and other factors.
- **Application/Folder Selection:** PCmover allows you to choose which applications

and files you would like to transfer. For more details, see **Customize the Transfer** on page 9.

- **Updates For Applications:** Some older applications may not work correctly after transfer without an update, especially if the operating system on the new PC is a more recent one than on the old. If you find this to be the case, please check with the application’s manufacturer for an update.
- **Accessing Applications in Windows 8:** Applications transferred to your new Windows 8 PC can be accessed by clicking on the application’s “tile” on the Windows Start screen.

To access the Start screen from the Desktop, move your mouse to the lower-left corner of the Desktop, and click on the Start icon. Once on the Start screen, scroll to the right to find your applications, which will be listed as individual “tiles” (click the arrow in the lower-left corner of the screen in Windows 8.1).

Certain applications can also be accessed from shortcuts on your Desktop.

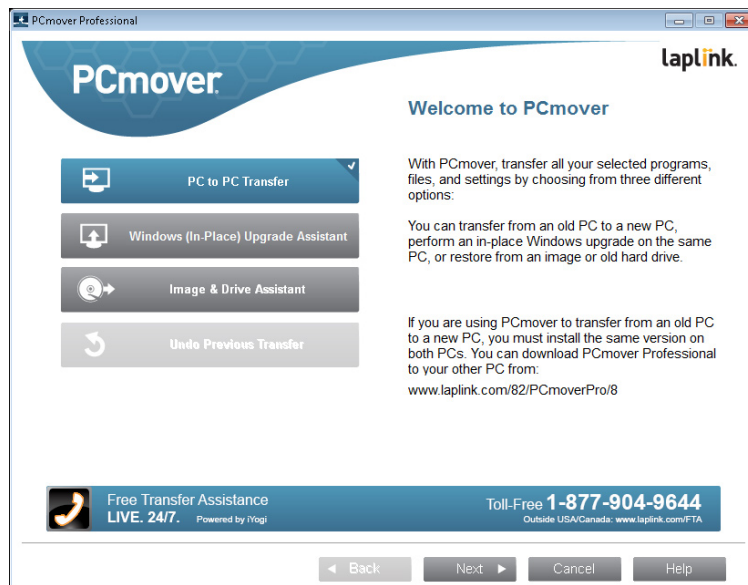
- **Accessing Shortcuts in Windows 8:** Any shortcuts that you previously had on your Desktop on your old PC can still be found on the Desktop on your new Windows 8 PC. To access the Desktop from the Start screen, click the Desktop tile.
- **Accessing Documents in Windows 8/Windows 7:** Documents transferred to Windows 8 or Windows 7 can be accessed from both the Start screen and the Desktop by pressing the **Windows key+E**. Then, in the window that appears, click the **Documents** listing under **Libraries** or **This PC** in the left pane.

IMPORTANT: Some applications with a copy-protection process known as Digital Rights Management may not function correctly after the transfer. These include such music-sharing programs as iTunes, MusicMatch and Napster, which will probably require reactivation on the new PC, possibly a Repair done through the Windows Control Panel, and possibly reinstallation. Certain other applications, such as Microsoft Office, may also require reactivation.

Old PC: Setting Up the Transfer

IMPORTANT: 'PCmover Pre-Transfer Checklist' (page 2) and 'Transfer Information' (page 3) should be reviewed and completed before beginning a PCmover transfer.

1. Welcome to PCmover



If PCmover is not already running, start PCmover on your old PC.

Note: If you see a Windows Security Alert (User Account Control dialog), select 'Unblock' or 'Yes' to proceed with running PCmover. The Security Alert is a standard Windows message that appears when starting most programs on your PC.

If you see the **New Version Available** button, click the button to get the latest version of PCmover. You will be taken to a Web page from which you can download the updated version, as well as the latest guide.

IMPORTANT: If a new version is available, please install the new version on BOTH computers immediately.

Old PC to New PC Transfer: If you are transferring from your old PC to your new PC, select **PC to PC Transfer** and click **Next**. Continue with step two on page 5.

Additional Transfer Options

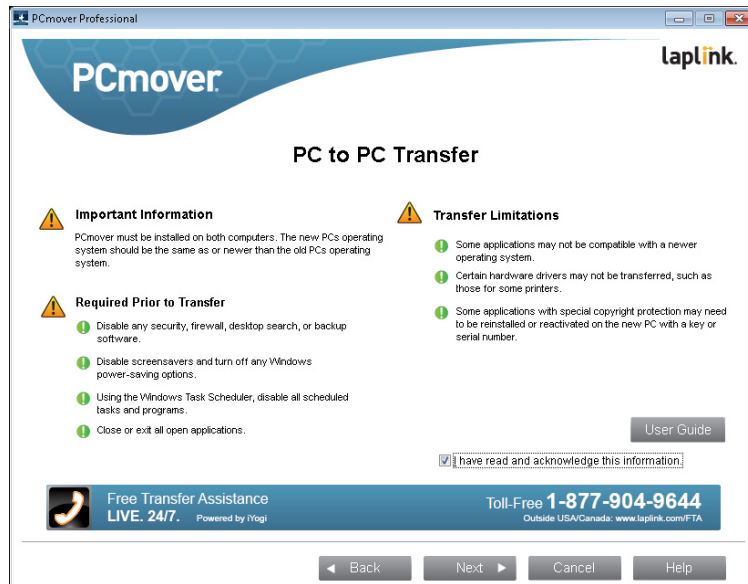
- PCmover Windows 8 Upgrade Assistant:** If you are upgrading from Windows XP/Vista/7 to Windows 7 or 8 on the SAME PC, select **Windows (In-Place) Upgrade Assistant** and click **Next**.

See the PCmover Windows 8 Upgrade Assistant user guide on Laplink's Web site for complete instructions for an in-place upgrade:
<http://www.laplink.com/pcmover/inplaceupgrade/pro8>
- PCmover Image & Drive Assistant:** If you are restoring from an image or an old hard drive, select **Image & Drive Assistant** and click **Next**. Follow the on-screen prompts to complete the restoration.

See the PCmover Image & Drive Assistant user guide:

www.laplink.com/pcmover/ida/pro8

2. PC to PC Transfer: Requirements and Limitations



Required Prior to Transfer: Make sure these important items are completed before continuing with the PCmover transfer.

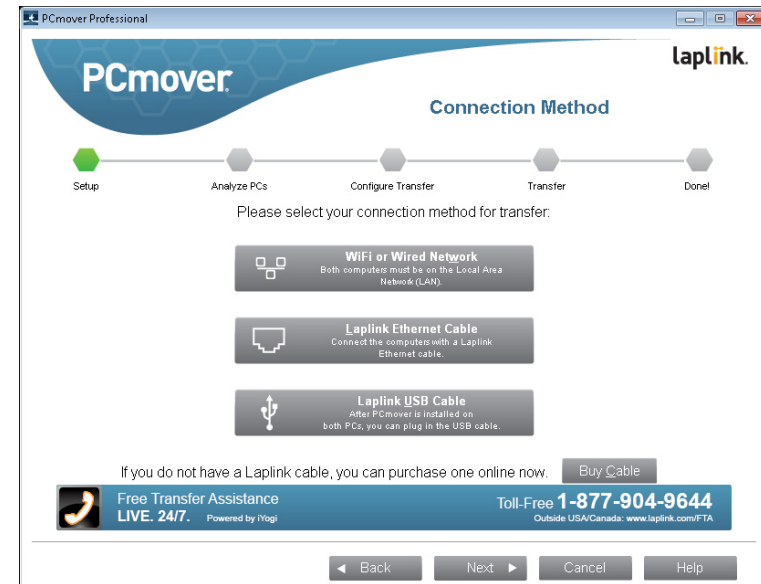
Transfer Limitations: Review important information about transferring certain types of applications.

After addressing all items listed, check the box and click **Next**.

3. Preparing Computers for Transfer

Choose **Old** (computer) and click **Next**.

4. Connection Method



Select your connection method, follow instructions below for that connection method, and then click **Next**.

- **WiFi or Wired Network:** Both your old and new PCs must be on the same WiFi or Wired Network.
- **Laplink Ethernet Cable:** After selecting **Laplink Ethernet Cable** and clicking **Next**, you will see the **Using a Laplink Ethernet Cable** screen. Please review the information on this screen and plug the Laplink Ethernet cable into your old PC.

Click **Next** and continue with step 5 of this section.

Note: As instructed on this screen, you should **ONLY** plug the Laplink Ethernet cable into your old PC. Do NOT plug the cable into your new PC yet. You will be instructed on the new PC when to complete this step.

- **Laplink USB Cable:** With PCmover installed on both PCs, plug in the USB cable to both PCs now.

Note: PCmover must be installed on both PCs before plugging in the USB

cable.

If the New Hardware Detected Wizard is displayed when you plug in the USB cable on Windows XP, select “No, not this time” and click ‘Next’.

If you see the dialog window stating that “Connection with a USB cable cannot be detected”, please verify that the cable is plugged in to both PCs.

5. E-mail or SMS (Text) Notification Option

PCmover Professional laplink.

Email or SMS (Text) Notification Option

Setup Analyze PCs **Configure Transfer** Transfer Done!

You may choose to have PCmover send notification when it has completed the transfer by filling out this form (Internet connection required). For a text message to your phone, use your SMS address (e.g. 2065551212@vtext.com).

Since this computer will be busy, be sure you have access to this email account from a different device (phone or other computer).

To proceed without notification, leave the fields blank and click 'Next'.

Name:

Email Address:

Message (optional):

Free Transfer Assistance
LIVE. 24/7. Powered by Nogi

Toll-Free **1-877-904-9644**
Outside USA/Canada: www.laplink.com/FTA

◀ Back Next ▶ Cancel Help

If you want to be notified by e-mail when the transfer is complete, enter your Name, E-mail Address, and a custom Message (if desired).

For a text message to your phone, use your SMS address (e.g., 2065551212@vtext.com).

If you want to proceed without notification, leave the boxes blank.

Click **Next** when finished.

Note: You must have access to your e-mail from another computer or a mobile device in order to receive the notification.

6. In Progress

PCmover is now waiting for the connection from your new computer. Please proceed to the next section to prepare your new PC for the transfer.

New PC: Setting Up the Transfer

1. Welcome to PCmover

Start PCmover on your new PC.

If you see the **New Version Available** button, click the button to get the latest version of PCmover. You will be taken to a Web page from which you can download the updated version, as well as the latest guide.

IMPORTANT: If you downloaded a new version on the old PC, you MUST also download the new version on the new PC. Both PCs must be running the same version of PCmover.

Select **PC to PC Transfer** and click **Next**.

2. Transfer to a New Computer: Requirements and Limitations

Required Prior to Transfer: Make sure these important items are completed before continuing with the PCmover transfer.

Transfer Limitations: Review important information about transferring certain types of applications.

After addressing all items listed, check the box and click **Next**.

3. Preparing Computers for Transfer

Choose **New** (computer), and click **Next**.

4. Serial Number Validation

Enter your name, e-mail address, and serial number, and click **Next**.

Serial Number: The location of your serial number depends on how you purchased PCmover.

- **Download:** When you purchased the product, you should have received a confirmation e-mail containing your serial number. If you no longer have the e-mail message, visit the "My Downloads" page of your Laplink Support Account at:

<http://www.laplink.com/mysupport/myStore.asp>

Once there, enter the e-mail address you supplied when you purchased the product. If you have forgotten your password, please enter your e-mail address and click on the **Forgot Your Password** link.

- **CD:** Affixed to the CD sleeve.

When you enter your serial number into PCmover, it is "validated" (checked for authenticity) using your new computer's Internet connection. If you are connected to the Internet but are unable to continue past the **Serial Number Validation** screen, first disable all security software, such as virus scanning, spyware scanning, and firewalls, and try again.

If that does not work, click **No Internet Access**. A screen will appear with your Network Name and Session Code.

You will need the Network Name and the Session Code, along with your PCmover Serial Number, in order to obtain the Validation Code, which will be used in place of your serial number to activate the product.

On another PC with Internet access, go to:

<http://www.laplink.com/validation>

Select **PCmover**, and follow the instructions on the page.

If an Internet connection is not available to you on any PC, please call our Customer Service team at (425) 952-6001.

Proxy Servers:

PCmover supports Basic Authentication and NTLM Proxy Servers.

If you are using a Basic Authentication Proxy Server, a dialog box will appear after you enter your serial number, asking you for your credentials. Enter your credentials and click **OK**.

If you are using an NTLM proxy server or no proxy server at all, this dialog box will not appear. Continue to step 5, "Connection Method".

5. Connection Method

Select the same method of data transfer as you selected on the old PC, follow instructions below for that connection method, and then click **Next**.

- **WiFi or Wired Network:** Both your old and new PCs must be on the same WiFi or Wired Network. Once you have selected **WiFi or Wired Network** and clicked **Next**, you will see the **Identify Old Computer** screen.

If the old PC is not listed, click **Browse** to find the old computer. If you do not see your old computer in the list, click **Re-scan**. Select your old computer and click **OK**.

Click **Next** and proceed with step 6 of this section.

Note: If your old computer isn't listed after clicking 'Re-scan', click 'Cancel' on both PCs to exit PCmover. Disable all firewall, antivirus, and antispyware applications on both PCs, confirm that both your old PC and new PC are connected to the Network and restart PCmover on both PCs.

- **Laplink Ethernet Cable:** After selecting **Laplink Ethernet Cable** and clicking **Next**, you will see the **Using a Laplink Ethernet Cable** screen. Please review the information on this screen, plug the Laplink Ethernet cable into your new PC, and click **Next**.

On the **Identify Old Computer** screen, your old PC should be listed in the **Network Name** text field.

Click **Next** and proceed with step 6 of this section.

Note: Per the instructions, the Laplink Ethernet cable should now be plugged into both computers, connecting your old and new PCs.

If you do not see your old PC listed in the text field, wait a moment for the connection between PCs to be established. If connection has not occurred after 60 seconds, click 'Browse' and manually select your old PC from the list.

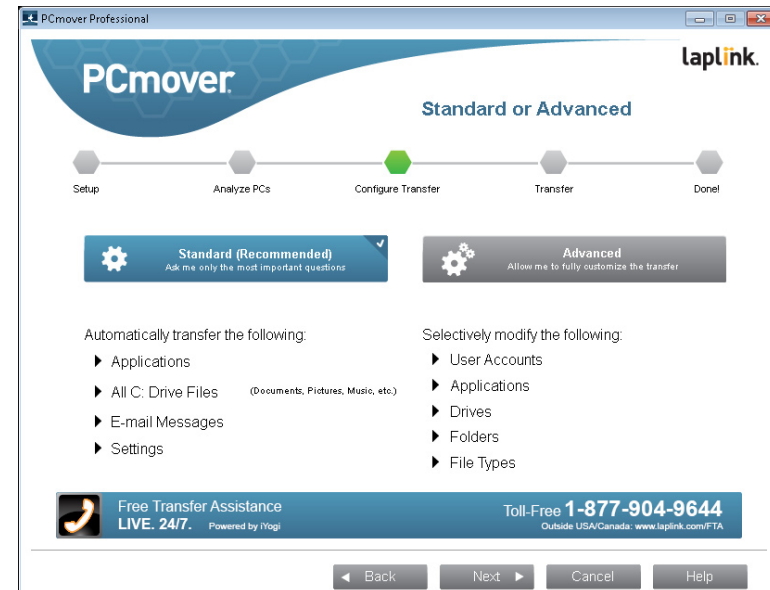
If you do not see your old computer in the list, click 'Re-scan'. Select your old computer and click 'OK'.

If your old computer isn't listed after clicking 'Re-scan', click 'Cancel' on both PCs to exit PCmover. Verify the Laplink Ethernet cable is plugged into both PCs and restart PCmover.

- **Laplink USB Cable:** Per the previous instructions for the old PC, the USB cable should already be plugged into both PCs.

Note: If you see the dialog window stating that "Connection with a USB cable cannot be detected", please verify that the cable is plugged in to both PCs.

6. Standard or Advanced



Depending on the configuration of your PCs, you may need to review certain settings before proceeding with the transfer. In this case, the 'Standard or Advanced' screen will not appear and the 'Customize the Transfer' screen will be presented next. Any settings requiring review will be marked with an "Attention" symbol.

- **Standard:** To transfer using default settings, select **Standard** and click **Next**. Continue with step 8, **Ready to Transfer** (skipping the **Customize the Transfer** screens).
- **Advanced:** To make changes to transfer settings, such as selecting applications and drives, select **Advanced** and click **Next**. Continue with step 7, **Customize the Transfer**.

7. Customize the Transfer



Select an item you wish to customize. Once finished with an item, you will return to this screen.

Click **Next** when finished customizing the transfer, and continue with step 8 on page 12.

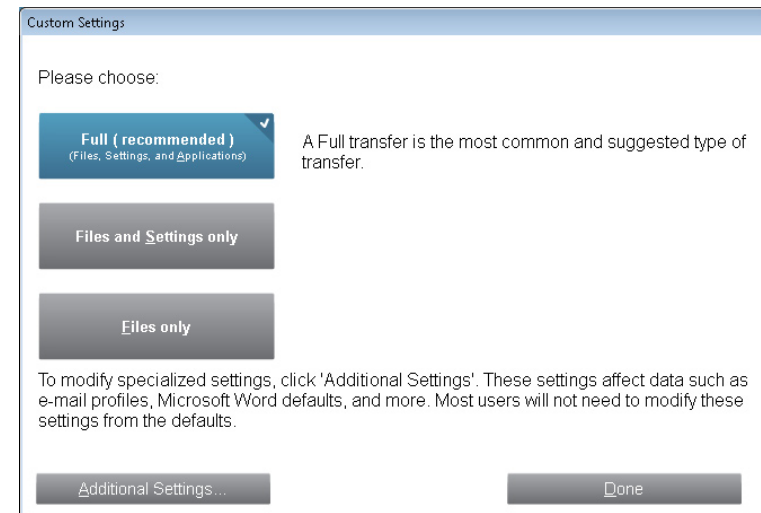
- **Custom Settings:** Applications, files, and settings will be transferred by default. On this screen, you may choose to exclude all applications and transfer files and settings only, or files only. See step 7a for further instructions.
- **Application Selections:** All applications that can be transferred are selected by default. If desired, you may deselect specific applications that you don't want transferred to the new PC. See step 7b for further instructions.
- **User Account Selections:** You may review and edit the settings for how user accounts will be transferred. See step 7c for further instructions.
- **Drive Selections:** If the old computer has multiple drives, all drives will transfer by default. If desired, you may review and edits settings for how

drives will be transferred. See step 7d for further instructions.

- **File Filters:** You may choose to exclude certain file types from the transfer. Filter is by file extension. See step 7e for further instructions.
- **Folder Filters:** You may choose to exclude certain folders from the transfer. See step 7f for further instructions.

Note: Any exceptions(s) marked with the "Attention" symbol must be reviewed before continuing.

7a. Custom Settings



- To continue with a full transfer, leave the default **Full** selected, and click **Done**. Otherwise, you may select **Files and Settings only** or **Files only**, depending on your transfer needs.

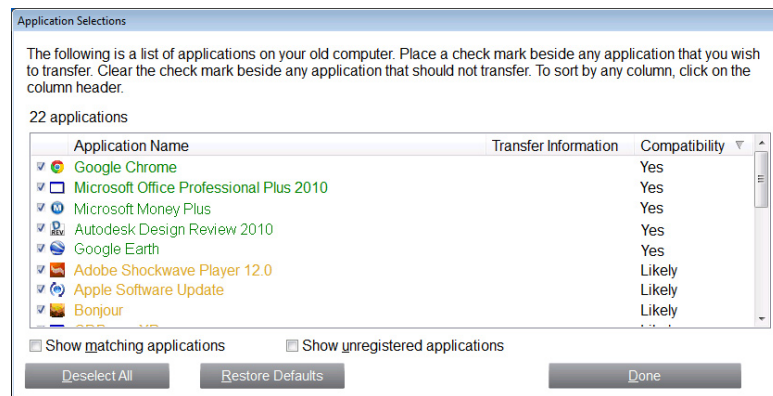
Note: For most transfers, no change from the default is needed. However, if you do choose 'Files and Settings only' or 'Files only', the other 'Customize the Transfer' screens will operate in conjunction with this selection.

Your choices on certain screens may also produce a different transfer result than if you had chosen to perform a full transfer. See

specific screens for more information.

- To make other custom changes to the transfer settings, click **Additional Settings**.

Note: Only specialized transfers will need revision of these settings. Be very careful when changing from the defaults, as any changes will have a significant impact on the transfer results.

7b. Application Selections

List of Applications: On this screen is a list of the applications on your old computer. All applications that are likely to transfer successfully are selected by default to transfer to the new PC. You may deselect any applications that you do not wish to have transferred.

To sort by any column, click the column header.

Colors: Applications are displayed in different colors to indicate which will transfer successfully. The Compatibility column also provides this same information.

- Green: Application is compatible for transfer. Application check box is 'checked' and application will be transferred.
- Red: Application is not compatible for transfer. Application check box is 'unchecked' and application will not be transferred.
- Yellow: If transferring from 32-bit operating system (OS) to 32-bit OS, or

64-bit OS to 64-bit OS, application is most likely compatible. Application check box is 'checked' and application will be transferred.

- Yellow: If transferring from 32-bit OS to 64-bit OS, application may not be compatible. Application check box is 'unchecked' and application will not be transferred.

Click **Done** when finished. Any applications not selected by PCmover are not likely to transfer successfully and should not be selected. See list below for applications and programs you should not transfer.

Do not transfer:

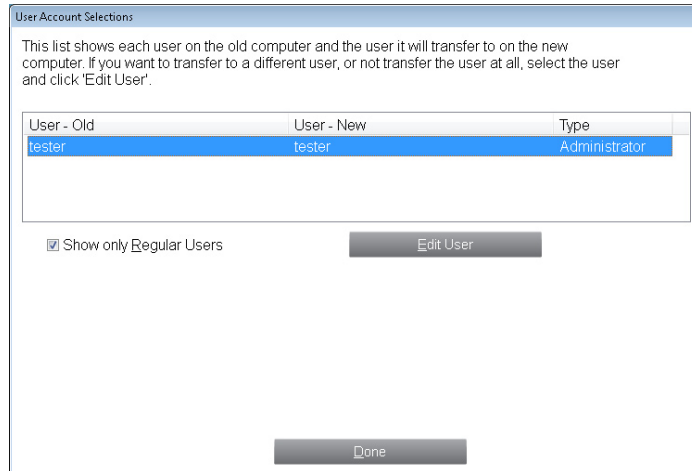
- Applications incompatible with the operating system on the new PC. Occasionally this may occur when transferring from an older operating system to a newer operating system, or when transferring from a 32-bit OS to a 64-bit OS.
 - Applications already installed on the new PC.
 - Applications with a trial version installed on one PC and the full version on the other PC.
- IMPORTANT: Trial versions of applications should always be uninstalled from the new PC before transferring a full version of the application from the old PC.**
- System tools, such as virus scanners, spyware detectors, firewall software, and desktop search utilities, which are unlikely to transfer correctly.

IMPORTANT: "Unregistered Applications" are those that do not appear in the Add/Remove Programs Control Panel in Windows. The term "Unregistered" does not, in this case, refer to whether you have registered a given application with its manufacturer.

This Unregistered Applications list will often include applications that are specific to hardware installed on the old computer. These will only work on the hardware for which they are designed, and may interfere or conflict with hardware for which they are not designed.

Note for 'Files and Settings only' and 'Files only' transfers: Applications will not be transferred, based on your previous selection.

7c. User Account Selections



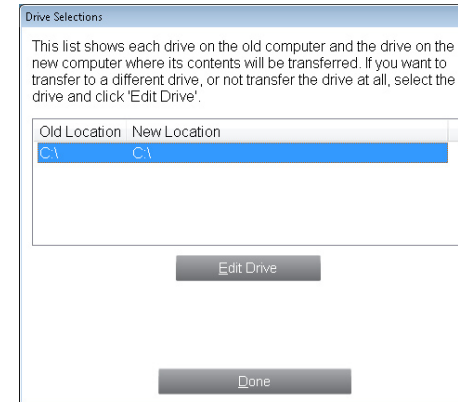
The settings and associated files for the users on your old PC will be transferred to the user accounts on your new PC as shown in the list. If you have already established settings for the users on your new PC prior to the transfer, these settings will remain the same and will not be overwritten by the transfer. The user names and passwords for the users on the new PC will also remain the same.

To transfer all of the users to the new PC as listed, click **Done**.

To modify how a user is transferred to the new PC, select the user in the list and click **Edit User**. In the dialog box that appears, you may choose to transfer to a different user on the new PC, or you may create a new user on the new PC. You may also choose to not transfer the user at all. Click **OK** when finished, and then click **Done**.

Note for 'Files only' transfers: If you chose 'Files only' on the 'Custom Settings' screen, no user settings will be transferred, only user files.

7d. Drive Selections



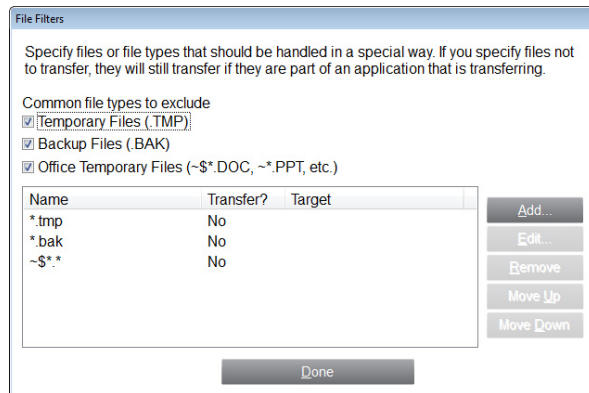
If the old PC contains more disk drives than the new PC, PCmover will create a folder for each drive that does not exist on the new PC.

To transfer all of the drives to the new PC as listed, click **Done**.

To modify how a drive is transferred to the new PC, select the drive and click **Edit Drive**. In the dialog box that appears, you may modify the drive and/or default folder to which the drive from the old PC is transferred. Make these changes in the "Transfer to New Directory" text field. You may also choose to not transfer the drive from the old PC. Click **OK** when finished, and then click **Done**.

Note: To run properly, some applications require installation to the same drive on which they were originally installed. If any applications that were installed on a secondary drive do not work on the new machine, uninstall them from the secondary drive and reinstall them on the primary drive.

Note for 'Files and Settings only' and 'Files only' transfers: Your choices on this screen will only affect settings and/or files (as applicable) on each drive. Applications will not be transferred, even if you choose to transfer a specific drive that contains applications.

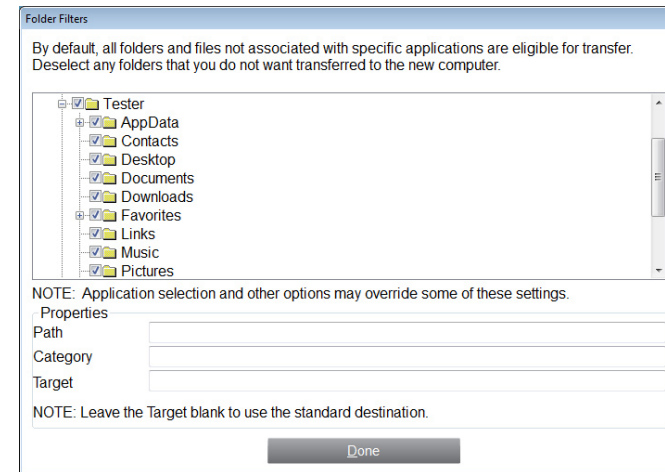
7e. File Filters

PCmover allows you to list file types to exclude from the transfer.

Some file types are already set up for you in this screen, such as temporary files (.tmp). These files are generally small, but if you have a large number of them, they can take up quite a bit of hard drive space. To exclude any of these file types, select the check box(es).

To exclude other file types not shown on this screen, click **Add** and type the file type extension(s) of the file(s) you wish to exclude. For instance, if you want to exclude all files in .jpg format, this is where you list "*.jpg". Click **OK** when finished listing file types.

Click **Done** when finished.

7f. Folder Filters

PCmover allows you to deselect and exclude specific folders from the transfer. If, for instance, you do not want to transfer any of the files in the Pictures or Music folders, you can deselect those folders in this screen, and they will not transfer to the new PC. You cannot exclude specific files, but you can exclude specific folders.

All folders that remain selected in this screen will transfer to the new PC.

Click **Done** when you have finished deselecting folders.

8. Ready to Transfer

This window presents a summary of files, settings, and total data that will be transferred. Depending on the speed of your connection, hardware configuration, and other factors, your transfer time may vary.

Click **Next** when ready.

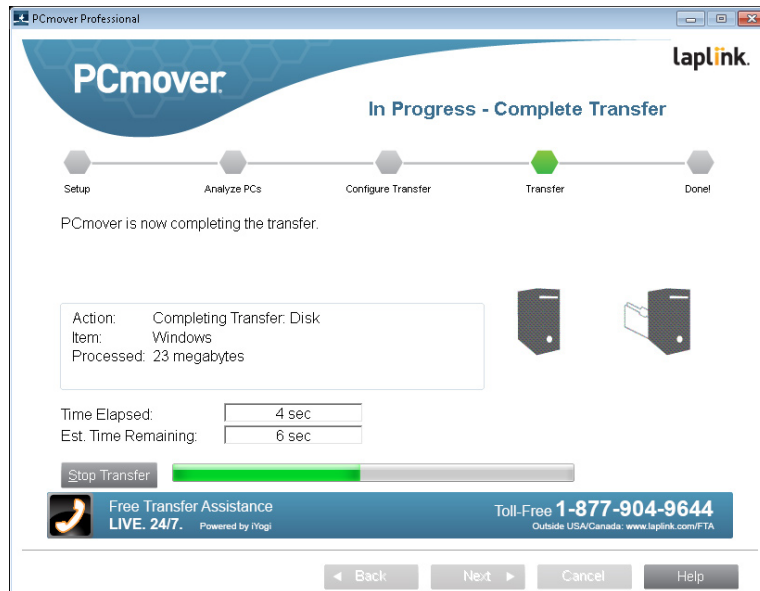
9. E-mail or SMS (Text) Notification Option

If you already entered your information for E-mail or SMS Notification on the old PC, leave the fields blank and click **Next**.

If you would like to receive notification and did not enter your information on the old PC, please follow the steps on the screen or refer back to page 6 of this guide.

Transferring from the Old PC to the New PC

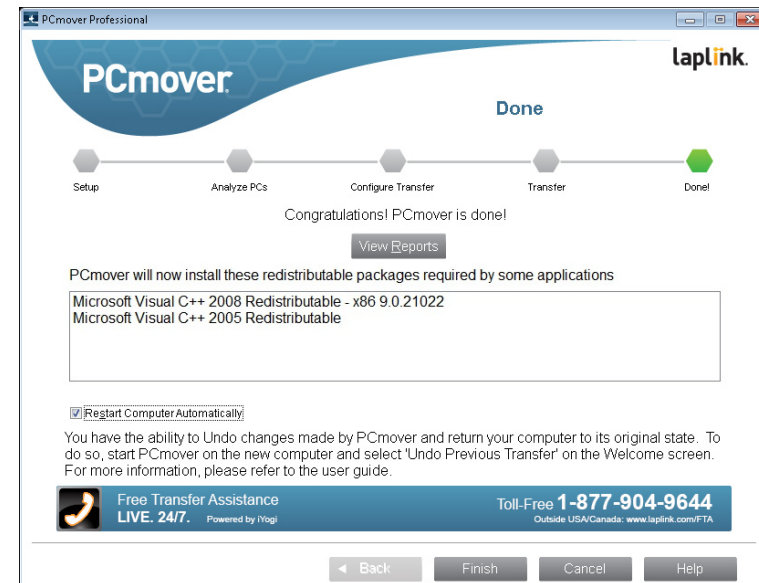
1. In Progress - Complete Transfer



PCmover is now transferring all of your selected programs, data files and registry settings to the new PC. The length of time required to perform the transfer depends on the configuration of the computers and the amount of data to be transferred, and could be as much as several hours or more.

Note: In very rare occasions the transfer of data will not continue; if you do not see any progress for more than an hour, you should restart the transfer.

2. Done



Congratulations! You have successfully transferred to your new PC.

At this point, if you used the Laplink Ethernet cable for your transfer and have a wired Internet connection, you should now unplug the Ethernet cable from your new PC and reconnect your Internet cable.

Internet connectivity is required so PCmover can install Microsoft Redistributable packages required by some of your applications.

You will need to restart your new PC for all of the settings to take effect. Click **Finish** to restart automatically.

Note: To maximize system compatibility, PCmover may not transfer certain system settings as well as hardware configurations. After the transfer, the following software may have to be reinstalled or reactivated on the new PC:

- Antivirus and antispyware applications
 - Hardware-specific drivers
 - Files with Digital Rights Management (e.g. copy-protected music files)
- If reinstallation or reactivation does not resolve problems, you may need to

contact the appropriate vendor for specific instructions. For more details regarding difficulty with applications running on the new PC, please see 'Helpful Hints' on page 14.

Additional Assistance

Troubleshooting

- **Registration - Validation Code**

When you enter your serial number into PCmover, it is "validated" (checked for authenticity) using your new computer's Internet connection. If you are connected to the Internet but are unable to continue past the **Serial Number Validation** screen, first disable all security software, such as virus scanning, spyware scanning, and firewalls, and try again.

If that does not work, click **No Internet Access**. A screen will appear with your Network Name and Session Code.

You will need the Network Name and the Session Code, along with your PCmover Serial Number, in order to obtain the Validation Code, which will be used in place of your serial number to activate the product.

On another PC with Internet access, go to:

<http://www.laplink.com/validation/>

Select **PCmover**, and follow the instructions on the page.

If an Internet connection is not available to you on any PC, please call our Customer Service team at (425) 952-6001.

- **Old PC Not Listed When Using Laplink Ethernet Cable**

Once you have reached the **Identify Old Computer** screen on the new PC when using the Laplink Ethernet cable method of transfer, your old PC should be listed in the **Network Name** text field.

If you do not see your old PC listed in the text field, first make sure that the Laplink Ethernet cable is plugged into both computers, connecting your old and new PCs.

Then, wait a moment for the connection between PCs to be established. If

connection has not occurred after 60 seconds, click **Browse** and manually select your old PC from the list. If you do not see your old computer in the list, click **Re-scan**. Select your old computer and click **OK**.

If your old computer isn't listed after clicking **Re-scan**, click **Cancel** on both PCs to exit PCmover. Verify the Laplink Ethernet cable is plugged into both PCs and restart PCmover.

- **USB Cable - Connection Cannot Be Detected**

If you see the dialog window stating that "Connection with a USB cable cannot be detected", please verify that the cable is plugged in to both PCs.

- **"Cannot Transfer PC Analysis" on "In Progress - Transfer PC Analysis" Screen**

Click **Cancel** on both PCs to exit PCmover. Then, restart PCmover and, on the **Welcome** screen, if you see the **New Version Available** button, click this button to get the latest version of PCmover. You will be taken to a Web page from which you can download the update. On this Web page, you will find a link to the latest version of this guide, which you should also use.

IMPORTANT: If a new version is available, please install the new version on BOTH computers. Both PCs must be running the same version of PCmover.

- **"Internal Compression" Error**

This error can occur during transfer if firewalls or other software are running in the background. Click **Cancel** on both PCs, disable all firewall and other programs running, and start the transfer again.

Helpful Hints

- **Accessing Applications in Windows 8:** Applications transferred to your new Windows 8 PC can be accessed by clicking on the application's "tile" on the Windows Start screen.

To access the Start screen from the Desktop, move your mouse to the lower-left corner of the Desktop, and click on the Start icon. Once on the Start screen, scroll to the right to find your applications, which will be listed as individual "tiles" (click the arrow in the lower-left corner of the screen in Windows 8.1).

Certain applications can also be accessed from shortcuts on your Desktop.

- **Accessing Shortcuts in Windows 8:** Any shortcuts that you previously had on your

Desktop on your old PC can still be found on the Desktop on your new Windows 8 PC. To access the Desktop from the Start screen, click the Desktop tile.

- **Accessing Documents in Windows 8/Windows 7:** Documents transferred to Windows 8 or Windows 7 can be accessed from both the Start screen and the Desktop by pressing the **Windows key+E**. Then, in the window that appears, click the **Documents** listing under **Libraries** or **This PC** in the left pane.
- **Microsoft Outlook/Outlook Express/Windows Mail:** PCmover will transfer Microsoft Outlook, Outlook Express, and Windows Mail but may not update your contacts and messages correctly. For help on updating these, please see:

<http://www.laplink.com/faq324.html>

Note: Windows 7 and Windows 8 operating systems do not include an e-mail program. If transferring to Windows 7 or Windows 8, your mail data will still be transferred, but you will need to obtain an e-mail client in order to use your mail data.

- **Using Transferred Applications:** If an application does not work or displays errors on the new machine, try a Repair done through the Windows Control Panel, and if that does not suffice, try uninstalling and reinstalling it. You may need to run the installation file as an Administrator. For more information on running programs as an Administrator, please check Windows Help.
- **Updates For Applications:** Some older applications may not work correctly after the transfer without an update, especially if the operating system on the new PC is a more recent one than on the old. If you find this to be the case, please check with the application's manufacturer for an update.
- **Programs Requiring Reactivation:** Some applications with a copy-protection process known as Digital Rights Management may not function correctly after the transfer. These include such music-sharing programs as iTunes, MusicMatch and Napster, which will probably require reactivation on the new PC, possibly a Repair done through the Windows Control Panel, and possibly reinstallation.

Certain other applications, such as Microsoft Office, may also require reactivation.

- **Music Files:** Because of the copy-protection methods, music files that are copy-protected may not play on the new computer without transferring the licenses for the music files. Look at the music application help files for information on transferring the licenses, or contact the music application vendor. You may also need to reinstall the music application.

- **Antivirus/Antispyware Applications:** Reinstall any antivirus or antispyware software. As previously stated, these types of applications are unlikely to transfer correctly.

Undoing a Transfer

PCmover allows you to restore your new PC to its original state before the transfer. If you wish to undo your transfer, please start PCmover on your new PC and follow the screens.

1. Welcome to PCmover



Select **Undo Previous Transfer**. Click **Next**.

2. Undo Previous Transfer

Required Prior to Undo: Make sure these important items are completed before continuing with the Undo. After addressing all items listed, check the box

and click **Next**.

3. Done

Click **Finish** to restart automatically.

Feedback and Support

We invite your comments on how well PCmover performed. Please feel free to contact us at:

feedback@laplink.com

In addition to the contact information for Customer Service at the top of this page, you can engage in a live chat online with a Technical Support Representative at the Web address below, during the hours listed on the page:

<http://www.laplink.com/contact/mychat.html>

Laplink is fully committed to your satisfaction with PCmover. Even if you purchased PCmover as a bundle with your new PC, please do NOT contact your retailer for support. If you have any problems, please visit our Web site at <http://www.laplink.com/contact> for information on the various methods of obtaining support directly from Laplink.